

## **Lifting on a budget**

TRANSLYFT Silverline budget lifting tables:  
Standard lifting solutions made for optimizing  
your workflow.

# There's a new standard **for being standard**

Our new Silverline series sets a new standard for non-bespoke lifting solutions. Let us find the right solution for your work station and optimize the productivity.

With our new Silverline budget lifting solutions, we focus on ergonomics and better workflows which ultimately provide efficient optimization of the productivity.

Good workplace ergonomics are important to make sure that employees work more efficiently and to avoid injuries and lost work days.

The Silverline lifting tables are designed in Denmark.

The Silverline budget lifting tables are a robust value for money solution. We have removed the large customizability of our standard Translyft lifters, whilst we have made some design optimizations relative to other budget lifting tables.

We want to ensure a good lifter for the standard lifts\* in the market, where price, delivery time and simplicity is in focus.

\*Standard lift: Full cycles up and down, up to 8 times an hour, 8 hours per day.



### **Optimize your workflow**

The Silverline budget lifting solutions is a range of lifting solutions to help you optimize your workflow.



### **Find the right solution**

We are eager to find the right solution for your needs. We can advise you on possible flow optimizations.



### **Designed in Denmark**



### **Better ergonomics improve efficiency**



### **Day-to-day shipment Service optimal**



### **Easy access to spare parts**

# Many different models

With Silverline we want to set a new standard for today's industry standard. We offer these products:

## SL 1000B & SL 1000F

Type: Lifting table

### Specifications

Capacity:	1000 kg
Travel:	810 mm
Size (L / W):	1300 mm x 800 mm / 1000 mm
Min. / Max. height:	200 mm / 1010 mm
Lifting time:	16 sec. / 18 sec.



## Optional accessories for SL models

- › Upper/lower limit switch
- › Mobility wheel kit
- › Truck frame

## SL 2000 & SL 2000F

Type: Lifting table

### Specifications

Capacity:	2000 kg
Travel:	810 mm
Size (L / W):	1300 mm x 800 mm / 1000 mm
Min. / Max. height:	200 mm / 1010 mm
Lifting time:	21 sec. / 23 sec.



Better manual handling



Designed in Denmark

## SM 2000

Type: Lifting table

### Specifications

Capacity:	2000 kg
Travel:	1050 mm
Size (L / W):	1700 mm x 1000 mm
Min. / Max. height:	250 mm / 1300 mm
Lifting time:	25 sec.



Meet the low profile lifting tables:

## SUB 1000

Type: Low profile u-shaped lifting table

### Specifications

Capacity:	1000 kg
Travel:	775 mm
Size (L / W):	1450 mm x 1140 mm
Min. / Max. height:	85 mm / 860 mm
Lifting time:	20 sec.



## SCB 1000

Type: Low profile lifting table incl. ramp

### Specifications

Capacity:	1000 kg
Travel:	775 mm
Size (L / W):	1600 mm x 1000 mm
Min. / Max. height:	85 mm / 860 mm
Lifting time:	20 sec.



Better manual handling



Designed in Denmark

Other manual handling equipment:

## SZ 500

Type: Lifting trolley

### Specifications

Capacity: 500 kg  
Travel: 595 mm  
Size (L / W): 855 mm x 500 mm  
Min. / Max. height: 285 mm / 880 mm



## SV 150

Type: Mobile lifter

### Specifications

Capacity: 150 kg  
Platform size (L / W): 605 mm x 475 mm  
Max. height: 1500 mm  
Lifting time: 18 sec.



## SPR 2000

Type: Pallet rotator

### Specifications

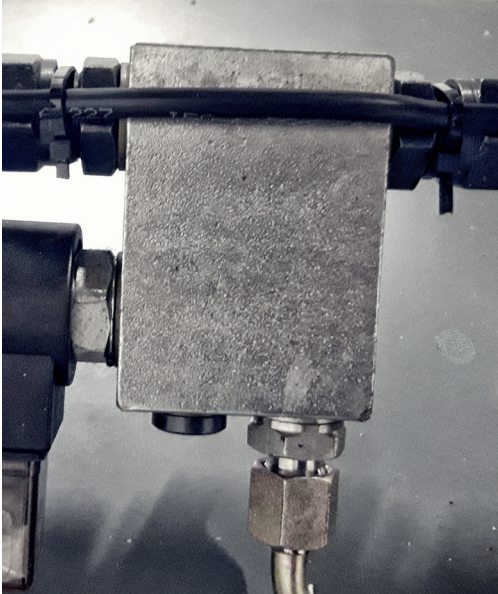
Capacity: 2000 kg  
Travel: 465 mm  
Size (L / W): Diameter: 1110 mm  
Min. / Max. height: 240 mm / 705 mm





# Special features

- ✓ The solenoid valve blocks the oil and stops the platform in place at hydraulic system failure



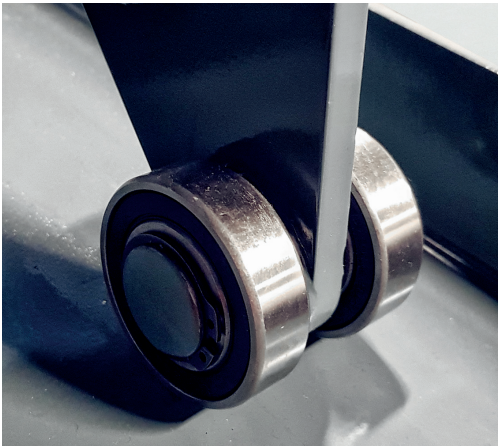
- ✓ Service/repairs can be done safely with the safety locks and they double as lifting eyes



- ✓ The limit switch stops the lift table at an exact height



- ✓ Robust control box



- ✓ Dual wheel system on the SL models makes the lifting smoother



- ✓ Improved wiring holds together the wires so they are not tangled up

TRANSLYFT was established in 1964 and is Denmark's largest developer and manufacturer of hydraulic lifting tables. At TRANSLYFT we know that every lift is unique, and we work closely together with our customers – from insight to finished solution.



**DK OFFICE**

Aalborgvej 321 / 9352 Dybvad / Denmark

**TEL** +45 98 86 49 00 **MAIL** [info@translyft.com](mailto:info@translyft.com)

**[www.translyft.com](http://www.translyft.com)**

**UK OFFICE**

Unit 6 / Shipston Business Village

Shipston on Stour / CV37 4FF

**TEL** 0870 904 7775

**MAIL** [enquiries@translyft.com](mailto:enquiries@translyft.com)

**NL OFFICE**

Binnendelta 7d

1261 WZ Blaricum

**TEL** 035 5315371

**MAIL** [benelux@translyft.com](mailto:benelux@translyft.com)